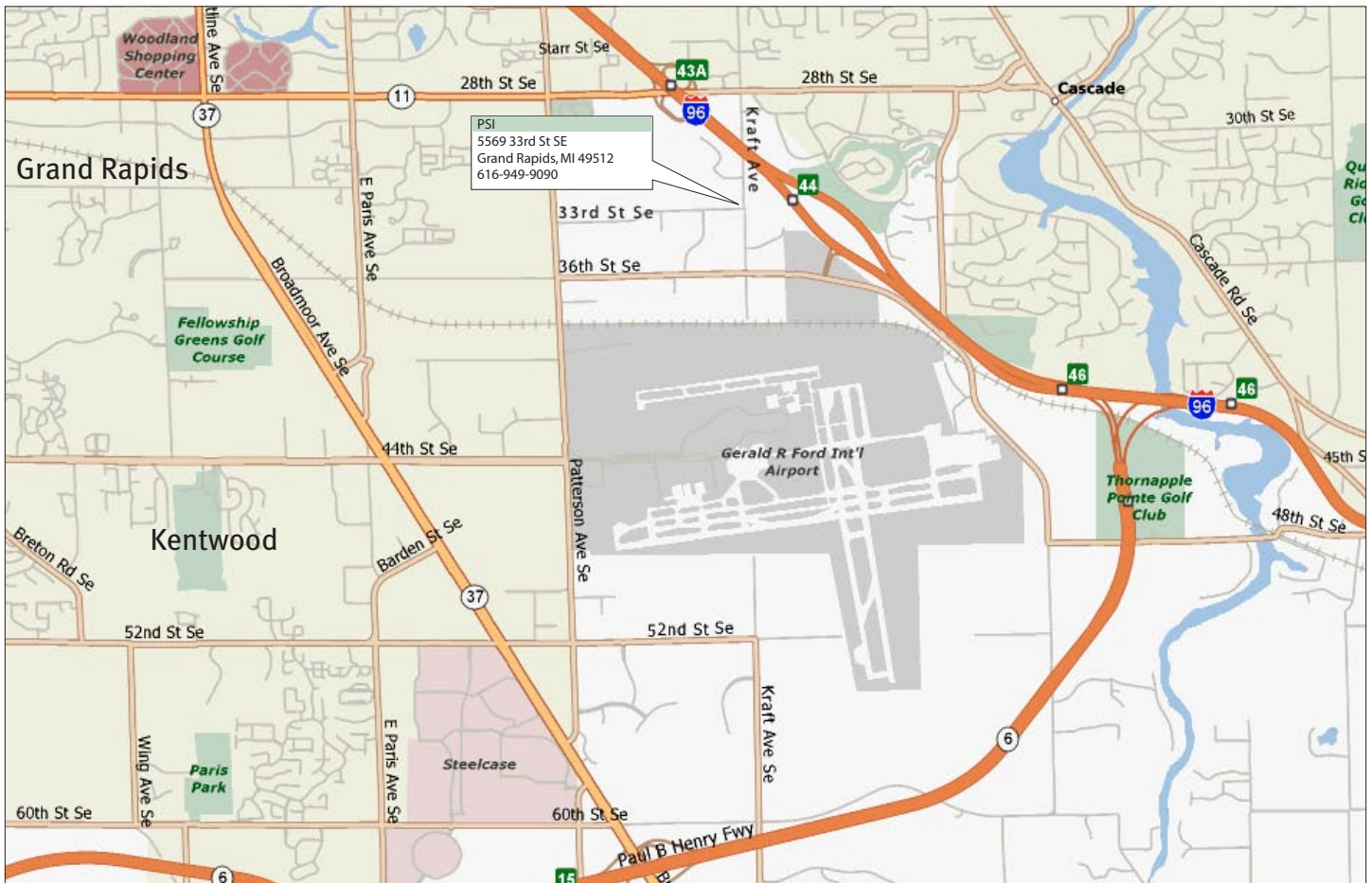


Directions to Performance Systematix Inc.



From Gerald R. Ford International Airport to Performance Systematix Inc.

- From the Gerald R. Ford International Airport, turn right (north) onto Patterson Avenue
- Take Patterson Avenue (1.0 miles) to 36th Street and turn right (east)
- Take 36th Street (1.0 miles) to Kraft Avenue and turn left (north)
- Take Kraft Avenue (.50 miles) to 33rd Street and turn left (west)
- PSI is located on the corner of Kraft Ave. and 33rd Street – the driveway entrance is off 33rd Street.

From Detroit/Lansing, MI to Performance Systematix Inc.

- Take I-96 West to Grand Rapids to Exit 44, 36th Street and turn right (west)
- Take 36th Street (.25 miles) to Kraft Avenue and turn right (north)
- Continue on Kraft Avenue (.50 miles) to 33rd Street and turn left (west)
- PSI is located on the corner of Kraft Ave. and 33rd Street – the driveway entrance is off 33rd Street.

From Holland, MI to Performance Systematix Inc.:

- Take I-196 East toward Grand Rapids. Take Exit 64, M-6 East toward Lansing (10 miles)
- M-6 merges with I-96, keep left and take I-96 West to Muskegon.
- Take Exit 44, 36th Street and turn right (west)
- Take 36th Street (.25 miles) to Kraft Ave. and turn right (north)
- Continue on Kraft Ave. (.50 miles) to 33rd Street and turn left (west)
- PSI is located on the corner of Kraft Ave. and 33rd Street – the driveway entrance is off 33rd Street.

From Kalamazoo, MI to Performance Systematix Inc.

- Take US-131 North toward Grand Rapids to Exit 77, M-6 East toward Lansing (10 miles)
- M-6 merges with I-96, keep left and take I-96 West to Muskegon.
- Take Exit 44, 36th Street and turn right (west)
- Take 36th Street (.25 miles) to Kraft Ave. and turn right (north)
- Continue on Kraft Ave. (.50 miles) to 33rd Street and turn left (west)
- PSI is located on the corner of Kraft Ave. and 33rd Street – the driveway entrance is off 33rd Street.



Performance Systematix Inc.

5569 33rd Street, SE

Grand Rapids, MI 49512 USA

Phone 616.949.9090

Fax 616.949.5154

www.psix.com

Note: The Shipping & Receiving docks are located at the rear of the building. Freight drivers turn right at the second driveway on 33rd Street and proceed straight ahead to the docks.